

A Touch of Class
A Touch of Prosperity
A Touch of Divinity



orchids
emerald
—  —

A PREMIUM VILLA PLOTTING OPP. INTERNATIONAL AIRPORT, RENIGUNTA



orchids emerald

A PREMIUM VILLA PLOTTING OPPOSITE **TIRUPATI INTERNATIONAL AIRPORT**



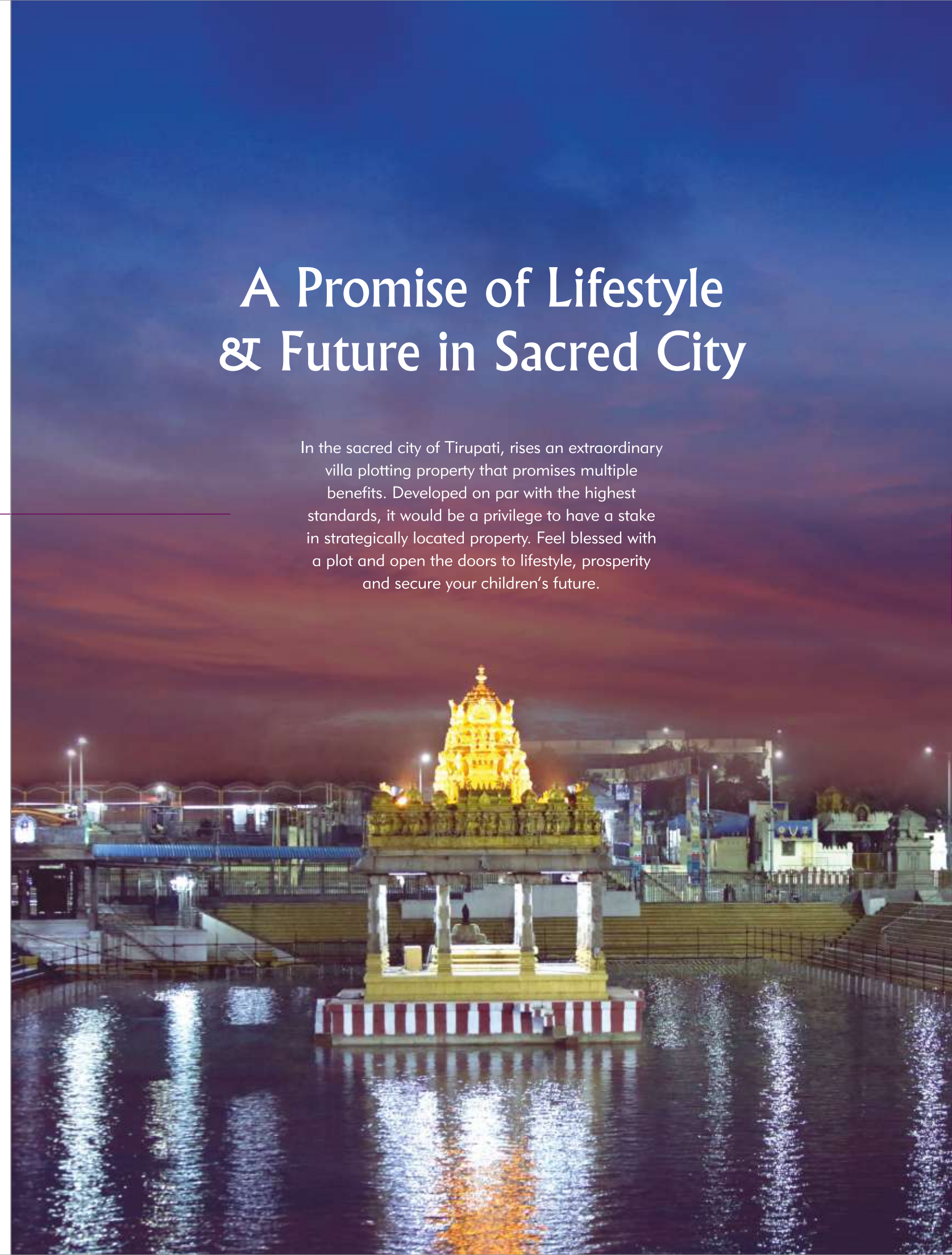
A Promise of Lifestyle & Future in Sacred City

In the sacred city of Tirupati, rises an extraordinary villa plotting property that promises multiple benefits. Developed on par with the highest standards, it would be a privilege to have a stake in strategically located property. Feel blessed with a plot and open the doors to lifestyle, prosperity and secure your children's future.



- PREMIUM PLOTS
- VILLAS
- RESORT

A PRESTIGIOUS PROJECT BY





Welcome to an Exceptional World




orchids
emerald






It's Sri KK Constructions' Promise



Clear Title
& Legal



Transparent
Practices



Customer - centric
Approach



On-time
Delivery



5 Years Free
Maintenance



Orchids Emerald is a premium villa plotting layout that promises to be a golden goose. Is it an opportunity for your dream villa? Or is it a Resort lifestyle? Is it a home-cum-office near your factory? Is it a move that guarantees the future of your children? Or is it your property just opposite an International Airport? The perks with a plot at Orchids Emerald are numerous with pleasant surprises.



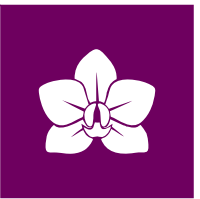


FEATURES THAT MAKE IT ONE-OF-A-KIND

- 
 OPP. TIRUPATI
 INTL. AIRPORT
- 
 42 MAJOR COMPANIES
 AROUND THE SITE
 (NON-POLLUTING)
- 
 FACING 100 FT WIDE
 4-LANE ROAD
- 
 HI-END
 AMENITIES
- 
 RESORT
 - LIKE
 CLUBHOUSE
- 
 TIRUMALA
 TEMPLE
- 
 HIGH
 WATER TABLE
 AT AROUND 60 FT
- 
 3-PHASE
 UNINTERRUPTED
 POWER SUPPLY

Take Lifestyle to Next Level

Orchids Emerald is a meticulously crafted 185 premium villa plots layout for those who appreciate the finer things in life. This exclusive development offers a host of amenities ensuring a leisurely lifestyle. From expansive greens and flawless internal roads to top-notch amenities and a grand Resort-like clubhouse, every square yard will exceed your expectations.





Get More than you Asked for

- 
 TUDA APPROVED LAYOUT
- 
 27.8 ACRES OF PRIME VILLA PROPERTY
- 
 40 FT WIDE INTERNAL BT ROADS
- 
 185 VASTU COMPLIANT PLOTS
- 
 30 - 200 ANKANAM PLOTS
- 
 14 ROAD - FACING COMMERCIAL PLOTS
- 
 ENTRANCE GATE WITH CONTROLLED ENTRY & EXIT
- 
 ALL ROUND COMPOUND WALL
- 
 STREET LIGHTING
- 
 AVENUE PLANTATION
- 
 DRIP IRRIGATION TO TREES
- 
 RAIN WATER HARVESTING
- 
 UNDERGROUND CABLING & DRAINAGE
- 
 CLUB MEMBERSHIP WITH A PLOT
- 
 TEMPLE FOR COMMUNITY
- 
 VASTU COMPLIANT
- 
 24-HR WATER SUPPLY THROUGH OVERHEAD TANK
- 
 24-HR PROFESSIONAL SECURITY

PROJECT HIGHLIGHTS



*Images are Only for Conceptual Representation



A World of Fun in Designer Outdoors



A diverse range of features attracts the residents to outdoors to pursue leisure time. A layout with rich amenities are designed by promoters to give residents a fulfilling life. Be it jogging in morning, sweating it out in outdoor courts or gym, or a leisurely connect with neighbours in seating areas, every moment is actively engaged at Orchids Emerald. Designer landscapes, plenty of plantation and play areas let children blossom in a secure environment. A plot in Orchids Emerald is indeed a privilege for your family.



OUTDOORS & SPORTS



BASKETBALL COURT



CRICKET PRACTICE NET



SEATING AREAS



GAZEBOS



JOGGING / WALKING



DESIGNER LANDSCAPING



PARKS & PLAY AREAS



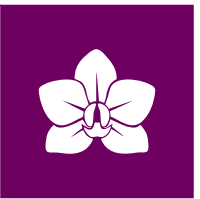
OUTDOOR TENNIS



BADMINTON COURT



AMPHI-THEATER





RESORT FEATURES

- 
EXCLUSIVE CLUBHOUSE
- 
GRAND ENTRANCE LOBBY
- 
RECEPTION & LOUNGE
- 
DOUBLE HEIGHT DINING HALL WITH KITCHEN
- 
MULTIPURPOSE HALL
- 
PERGOLA WITH SEATING PLAZA
- 
SWIMMING POOL WITH KIDS' POOL
- 
AEROBIC / YOGA & MEDITATION HALL
- 
FOREST THEME PLANTATION
- 
BANQUET HALL
- 
MINI GOLF
- 
INDOOR GAMES ENCLAVE
- 
GYMNASIUM
- 
HOME THEATER
- 
GUEST COTTAGES
- AND MANY MORE...**

Resonate with Exciting Moments

You will expect a clubhouse but find a Resort-like complex on grand scale at Orchid Emerald. Stay fit with jogging and gym sessions within the clubhouse. Engage with the community in the rich landscape, which offers a variety of leisure options. Relax as you tee off in mini golf course, play indoor games, give swimming lessons to children, and celebrate parties in the gorgeous multi-purpose hall. Add flavor to your lifestyle in Orchids Emerald.



*Images are Only for Conceptual Representation.

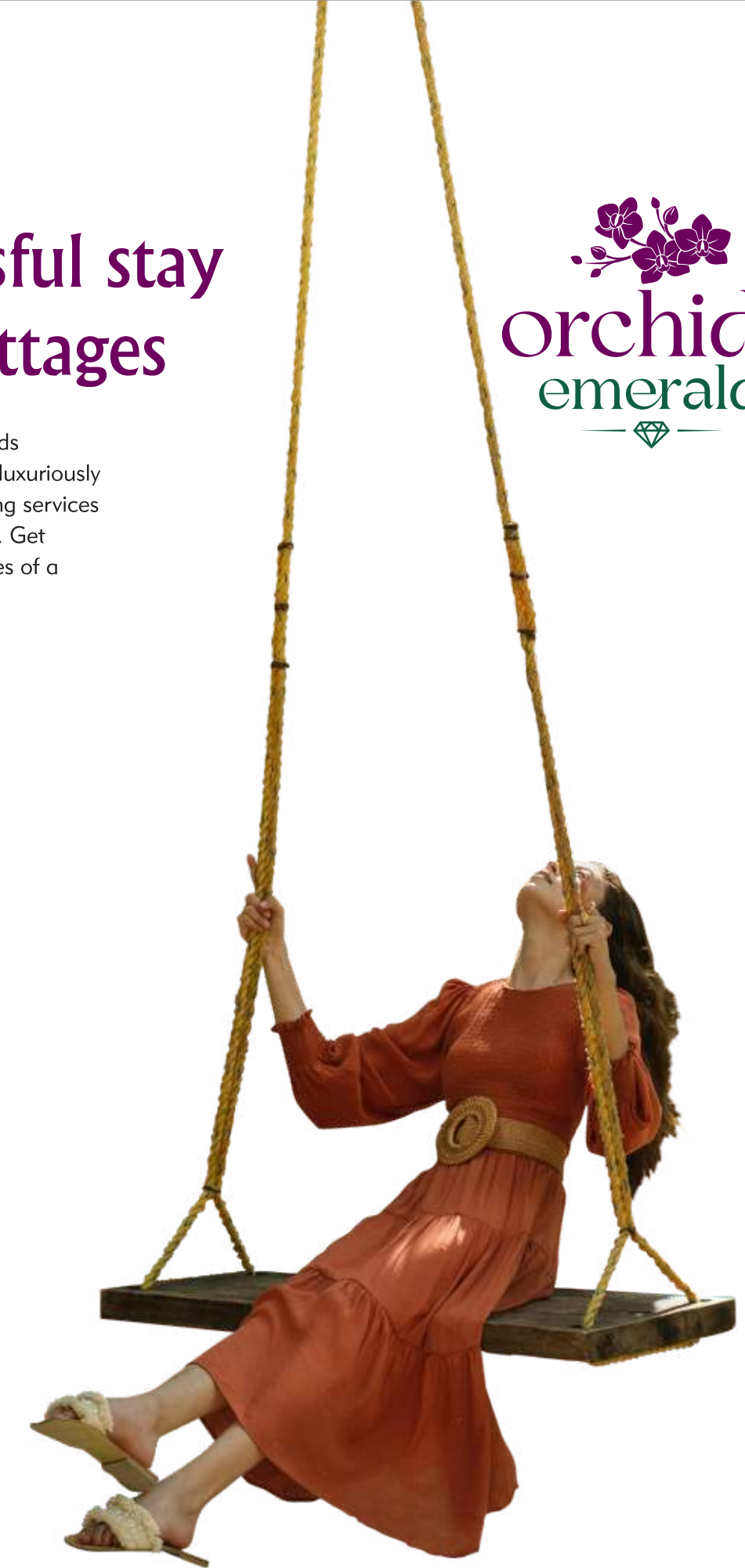


Experience a blissful stay in Star-quality cottages



Why stay in a hotel when you have cottages in Orchids Emerald? Enjoy the convenience of free boarding at luxuriously appointed Cottages three times a year. Get pampering services during your stay that let you focus on travel itinerary. Get ultimate comfort and cherish the pleasant experiences of a lifetime visiting the pilgrim destination.

- Limousine Pick-up & Drop of service from Airport & Railway Station
- 8 Luxury Cottages
- 24-hr Concierge services
- Travel Desk
- Restaurant
- Luxurious cottages
- Spacious bedrooms with balconies
- Private courtyards
- Housekeeping services

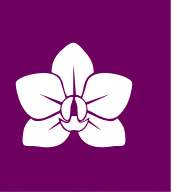




RESORT PLAN



Feel like Royalty at
Resort-like Clubhouse





1. Main Entrance & Exit
2. Entrance Paving
3. Security Cabin
4. Park Entrance
5. Water Body
6. Seating Plaza with Specimen Tree
7. Reflexology Pathway
8. Feature Wall with Portal Frame
9. Mound
10. Amphitheater
11. Stage
12. Party Lawn
13. Forest Theme Planting
14. Pergola with Seating Plaza
15. Multipurpose Play Court
16. Children Play Area
17. Lawn
18. Pathway
19. Badminton Court
20. Outdoor Gym
21. Elders' Seating
22. Cricket Practicing Net
23. Basketball Court
24. Mini Golf Court
25. Baby Pool (30'x16')
26. Lap Pool (60'x60')
27. Pool Deck
28. Sunken Seating
29. Stepping Stones
30. Water Feature
31. Tropical Planting
32. Specimen Tree
33. Car Parking
34. Planter Box
35. Avenue Planting

LEGEND



EXISTING 60' WIDE ROAD



Site Layout Plan

L.P.No:50/2023/1166/TUDA/DPMS

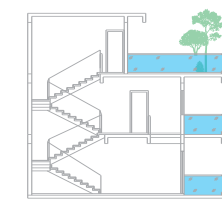




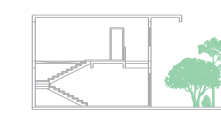
Want a Dream Villa? Leverage the Promoters' Experience



**CHOICE
YOURS!**



TRIPLEX

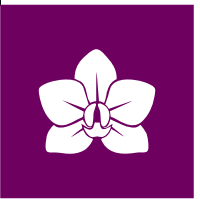


DUPLEX



SIMPLEX

You may be an NRI or living elsewhere, don't postpone your new villa. Leverage the promoters' professional services to your advantage in building a dream villa. You will get the finest floor plans, the best brands, quality Interiors in your new home built within optimum budgets and timescale. Just sign across the cheque and find a villa on your plot with Promoters working out the rest.

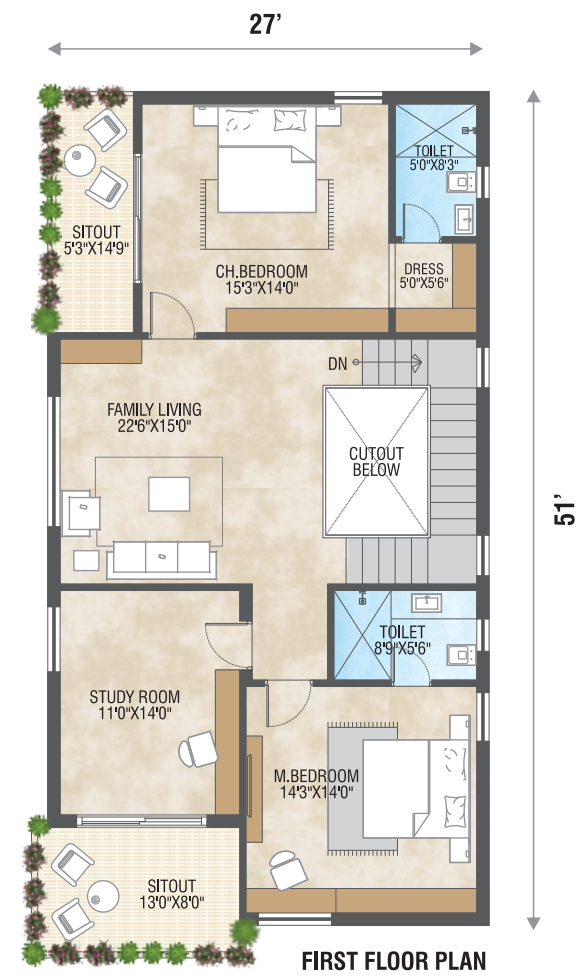
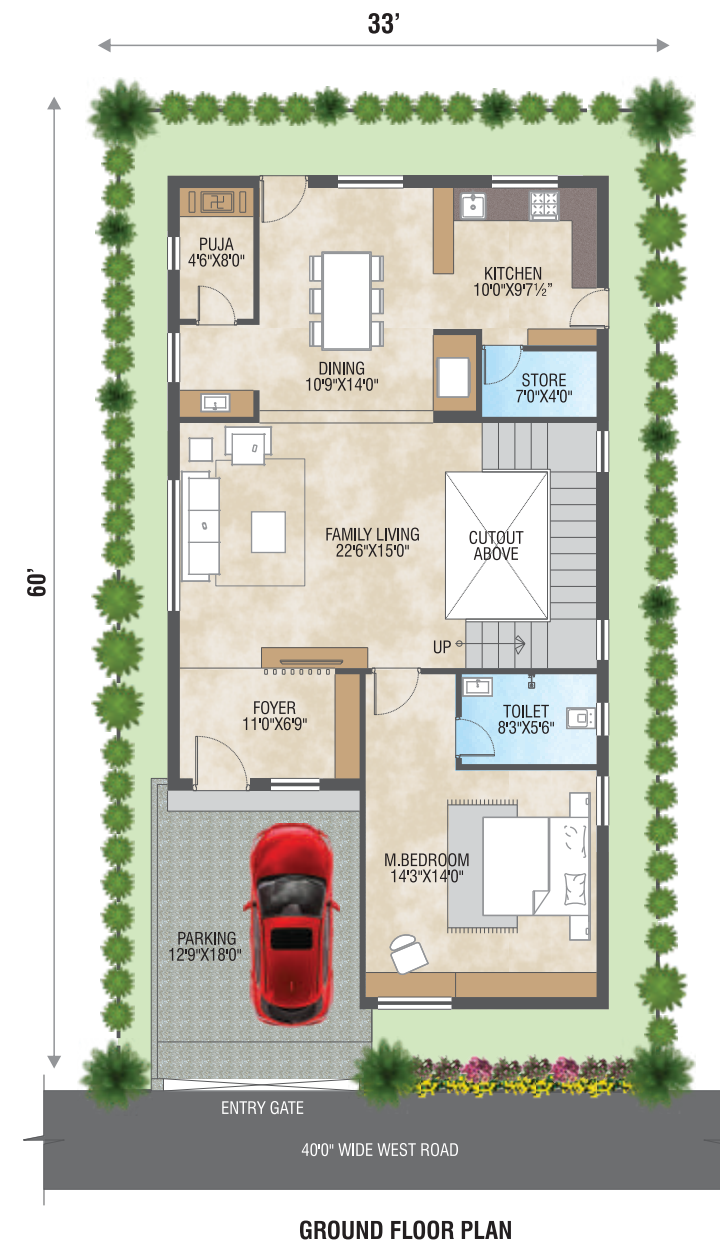
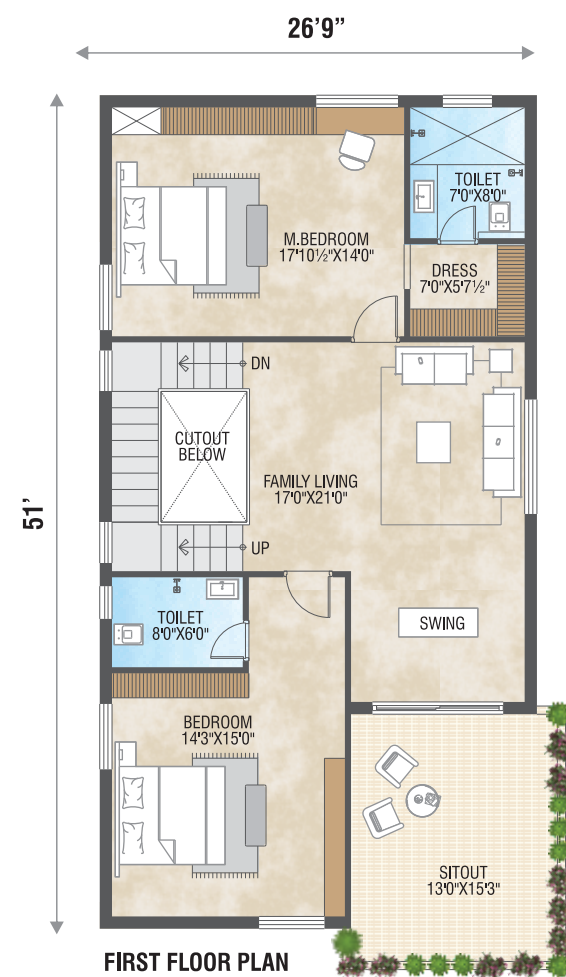
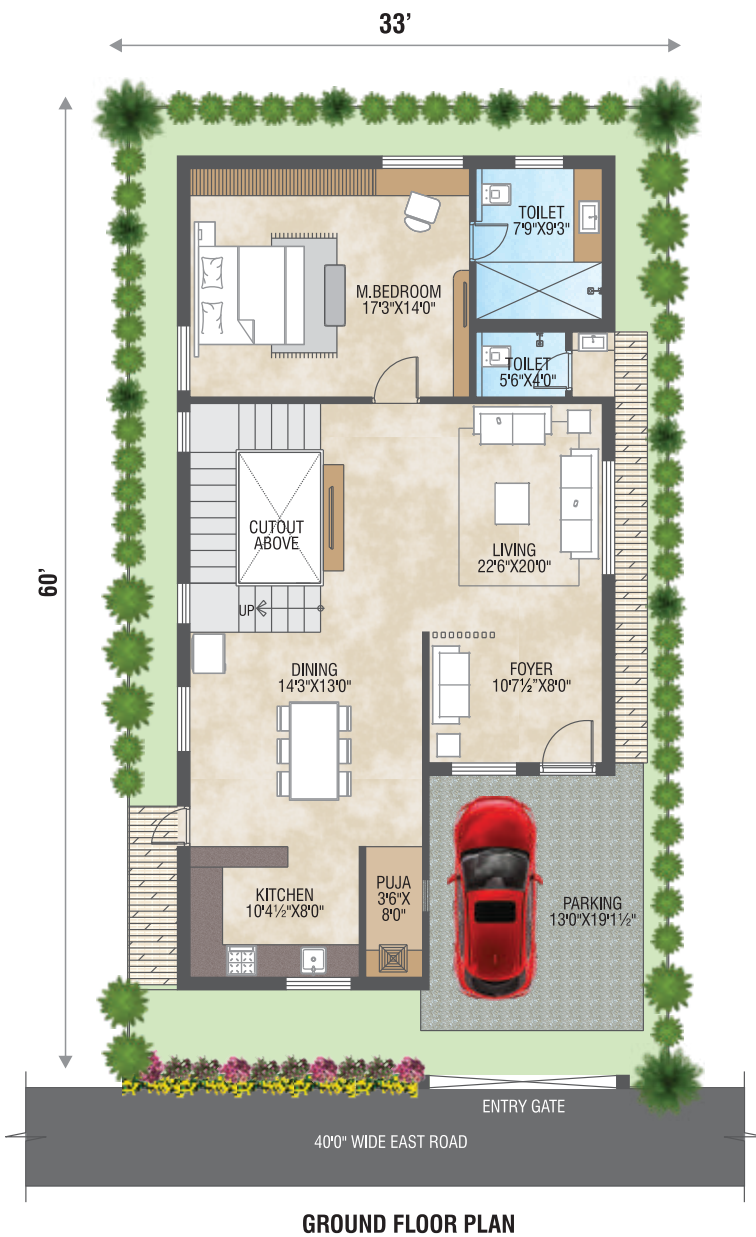
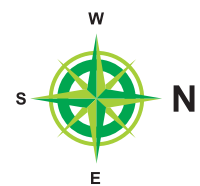


orchids
emerald

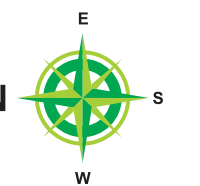


Be Blessed
with a Property

EAST FACING VILLA
33' X 60'



WEST FACING VILLA
33' X 60'



Tirupati, the Sacred City, is also a 'Smart City' with concerted development initiatives. As airport is expanding for larger aircraft landing, cargo service and maintenance, you have ample opportunities in lucrative commercial enterprise. Orchids Emerald offers more than just a regular home; it's an unbeatable proposition for investment. From reputed schools and corporate medical care to shopping and dining, Renigunta is growing rapidly to merge with Tirupati city. Get a plot and give your children the security of a bright future.

Capitalize on Investment

1st Project in Tirupati to offer 80% Loan!



Orchids Emerald is the FIRST project in Tirupati to benefit from APF (Approved Project Finance) facility. Customers can avail 80% loan amount from all National Banks. You are empowered to realize your villa dream at Orchids Emerald faster than anywhere else.



A customised APP - Convenience at your fingertips



And Many More Features

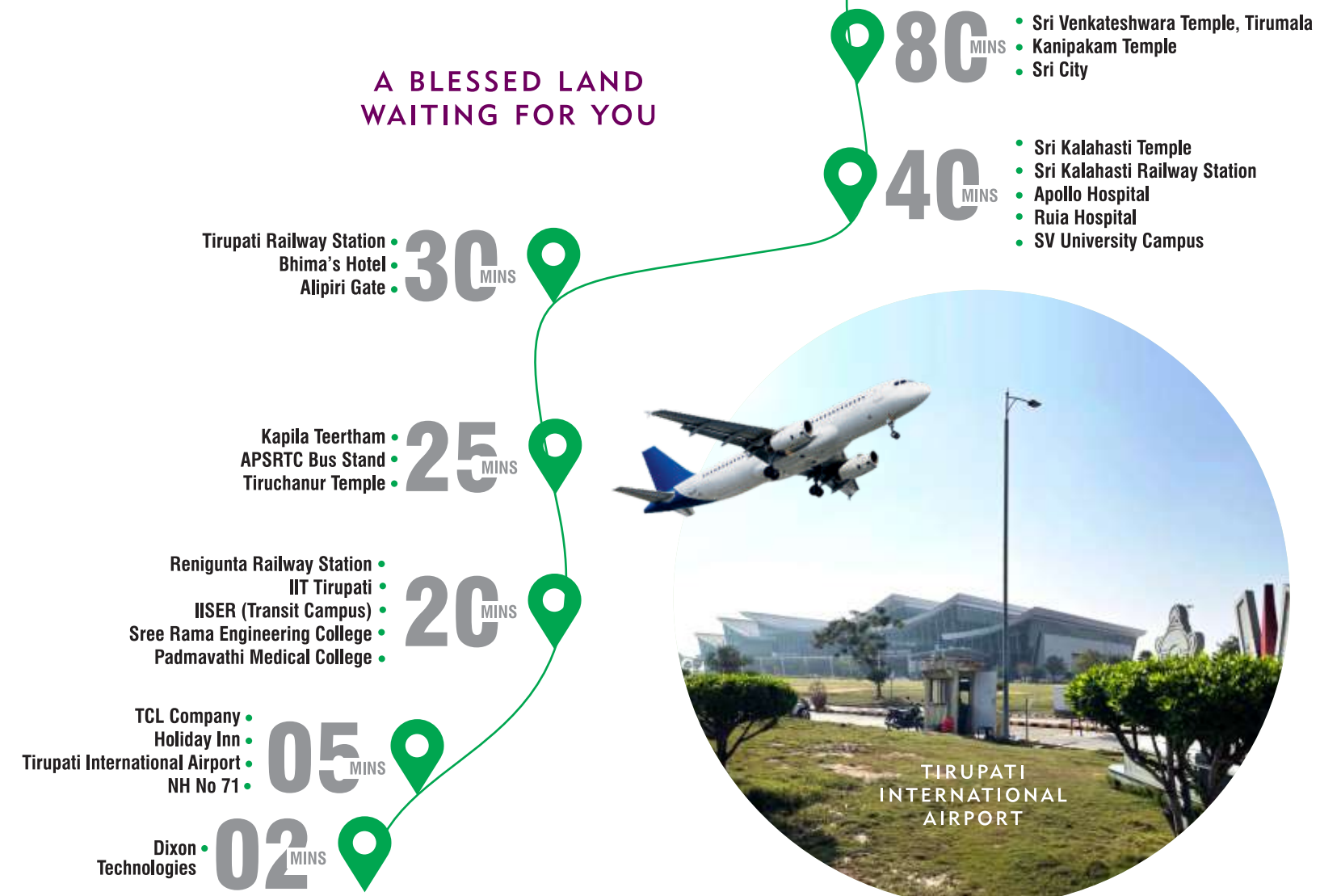
The promoters have developed an APP to streamline the community issues of Orchids Emerald. At your fingertips, you can navigate through and sort out Pre and Post-sale issues. Check the availability of plots, book site visits, process legal documents and apply for bank loans - all from the comfort of your couch at home. Make referrals and earn money, stay connected with community over events calendar, scan gallery for latest images. The APP keeps you informed and application process easy saving time and money.





orchids emerald

A BLESSED LAND
WAITING FOR YOU



Your Plot - A Divine Opportunity

Located on 100 ft wide, 4-lane road, just across the Tirupati International Airport, Orchids Emerald offers the premium address and an easy access to your office. Orchids Emerald also offers a unique commercial opportunity in a few road-facing plots as the Airport opens avenues to international business.



ACTUAL PHOTOGRAPH FROM SITE



OWS Building, EMC-II



Wingtech Mobile Communication



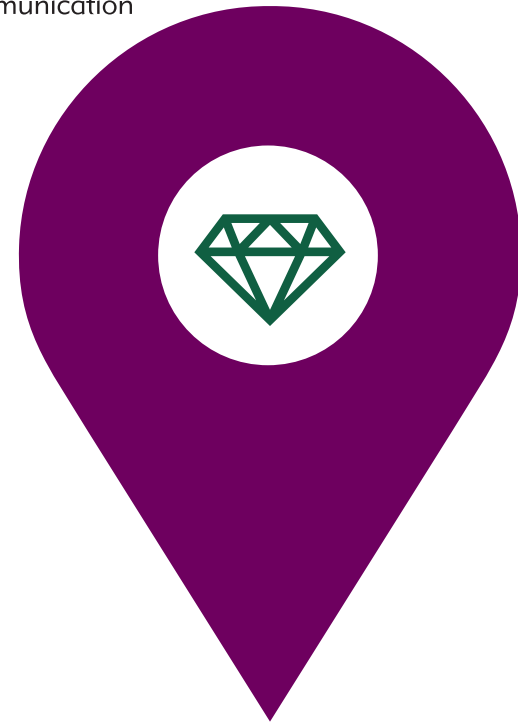
Foxlink India Electric



Karbonn



Dixon Technologies



International Institute of Digital Technologies

Multi-national Industries in 5-10 Mins distance (Non-polluting Electronics companies)



Celkon



APIIC



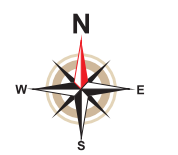
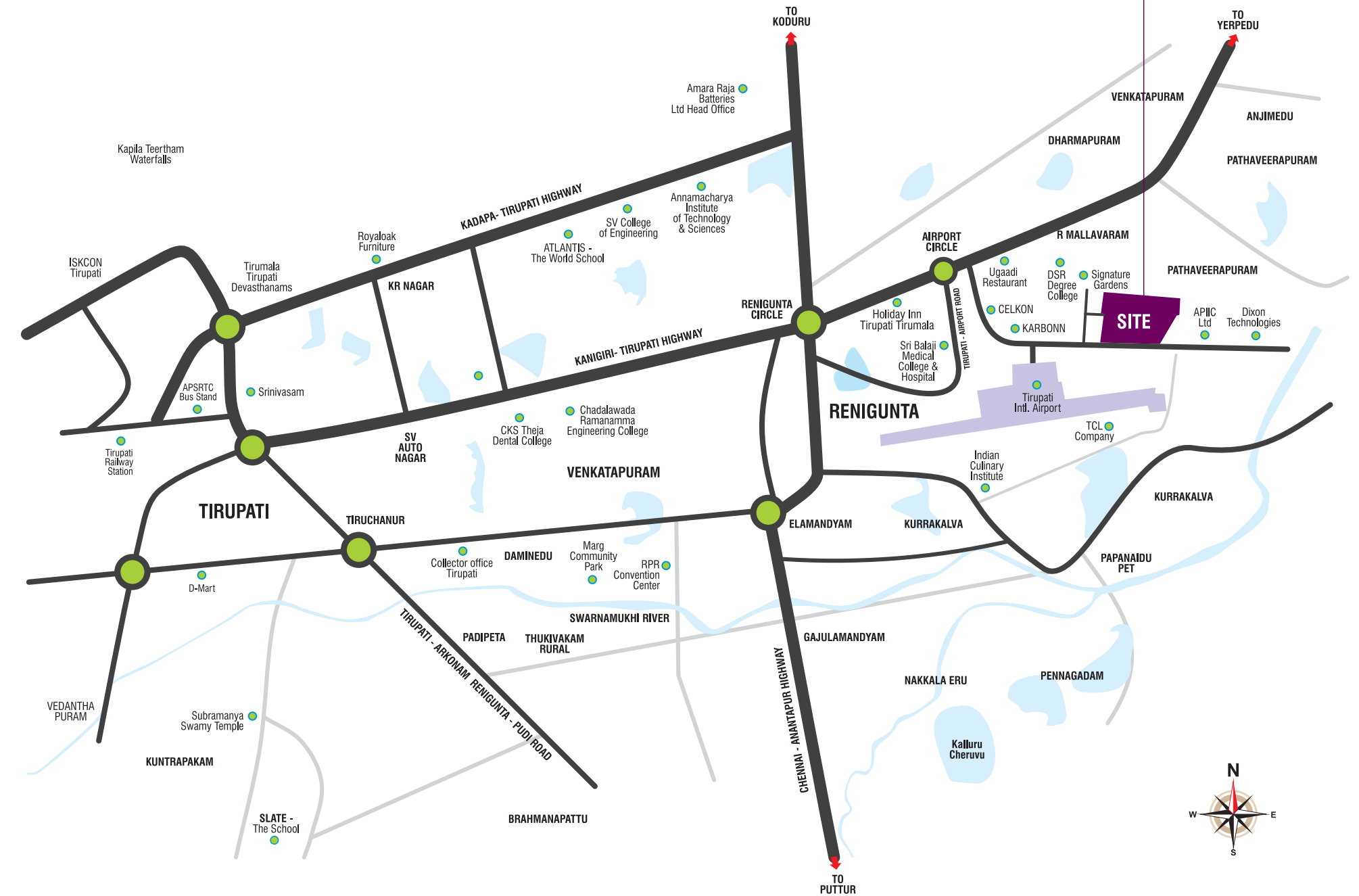
7 Hills Digital Park



Sunny Opotech India

In The Heart of Happening Tirupati

Renigunta, a suburb of Tirupati is flourishing on account of airport, Industry and pilgrimage. Well connected to all important destinations, Renigunta is blossoming into a home for high income communities. The distance between Renigunta and Tirupati is erasing. Your investment in Orchids Emerald will appreciate fast and deliver substantial lifestyle advantage.



LOCATION MAP
(Not to Scale)



A few decisions you make in life are Memorable.
A plot in Orchid Emerald is one of them.

PROMOTERS



CORPORATE OFFICE

Plot No 339, Ground Floor, Road No 23/A, Jubilee Hills
Hyderabad - 500 033, Telangana

SITE OFFICE

Dixon Road, Near Airport, Jinkalmetta Village
Govindavaram Panchayathi, Yerpedu Mandal
Tirupati District - 517 520, Andhra Pradesh

+91 99999 99999 info@srikkconstruction.com srikkconstruction.com

ARCHITECTS

IMPACT
— architecture studio —

LANDSCAPE ARCHITECTS

LAND & FORM

Email: land8form@gmail.com